



ADDRESSING VIOLENCE AGAINST WOMEN UNDER COVID-19

LESSONS FROM BRAZIL & BEYOND

World Bank

Paula Tavares, Gabriela Bastos and Flávia Carbonari

July 2020



COVID-19 and violence against women



Emerging evidence from COVID-19 impacts as well as lessons from past epidemics suggest that significant risks of VAW increase in these contexts



Increased risk factors for women during pandemics



❖ **Greater vulnerability and care burden**

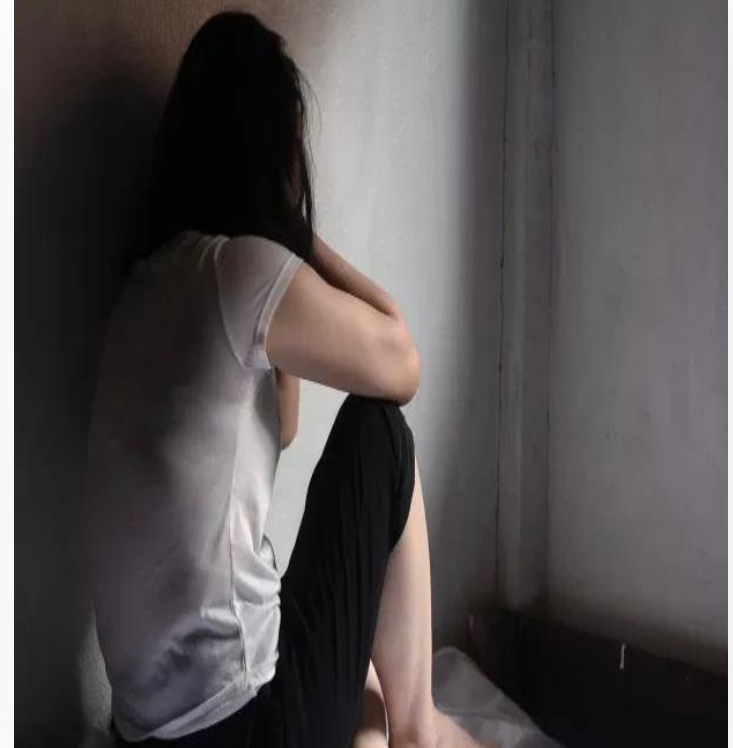
Earn less, save less, hold more vulnerable jobs
Heightened unpaid care burden &
risk of sexual exploitation

❖ **Greater exposure to violence**

quarantine at home with abusers
problematic coping behaviors
mounting social and economic stress

❖ **Limited access to services and resources**

Limited mobility to escape
Contraction of health, security and justice sector
services



Violence against women under COVID-19 in Brazil



A snapshot of the data for March-April 2020

INCREASE IN VIOLENCE & CALLS FOR HELP, BUT GREATER CHALLENGES IN REPORTING



FEMICIDES MARCH/APRIL



Increase in lethal violence



Increase in complaints to the national VAW helpline



Greater difficulty in reporting



REPORTS OF RAPE CASES



REPORTS OF PHYSICAL AGGRESSION CASES



Measures adopted in different countries to respond to new & increased challenges ...



REVISIONS TO JUSTICE SYSTEM

TRAINING FOR POLICE (BOLIVIA)
VIRTUAL COURT HEARINGS (MEXICO)
GEOREFERENCED HELP (SPAIN)
ONLINE REPORTING | ISSUANCE OF PROTECTION ORDERS (FRANCE)



INCREASED RESOURCES

FREE HOTEL ROOMS (BELGIUM)
24 HOUR COUNSELING (PERU)
INCREASED STAFFING FOR VAWG
HOTLINES & CHATROOMS (MALAYSIA)



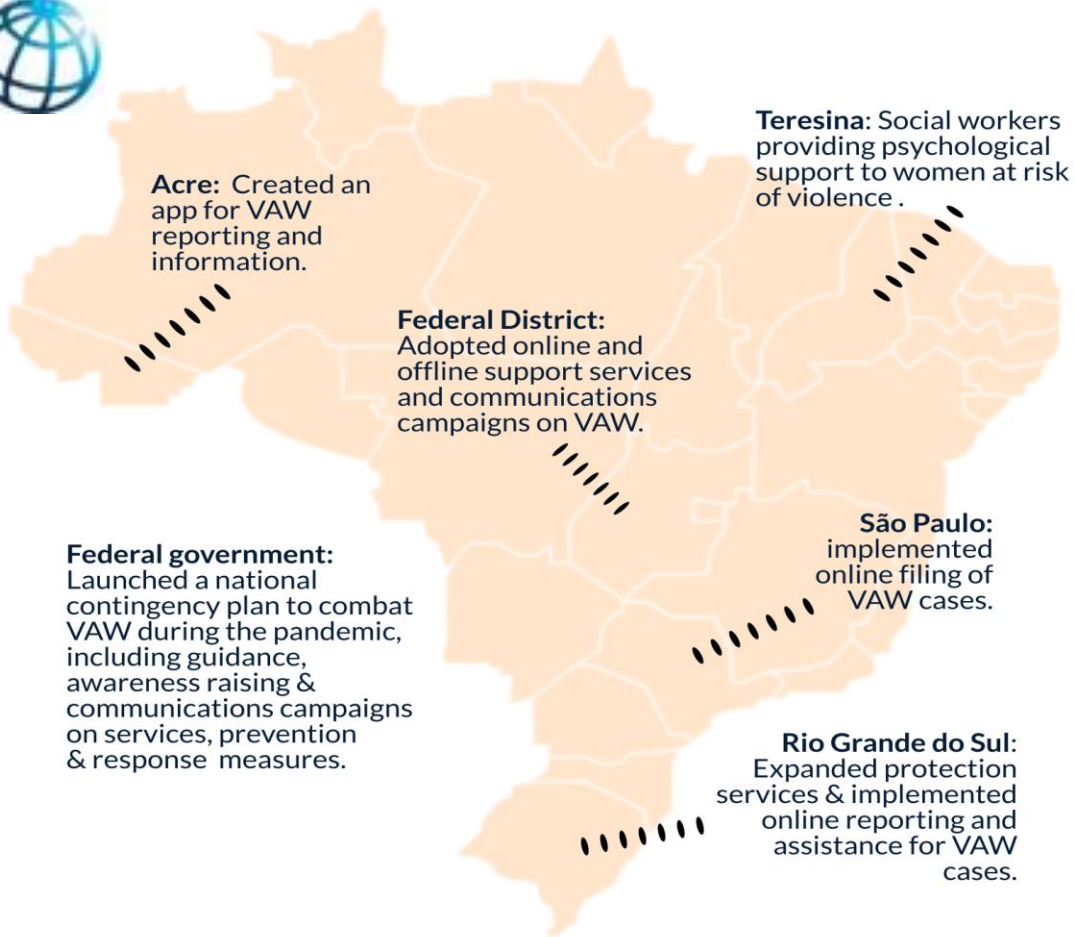
MEDIA CAMPAIGNS

MUSIC VIDEO CAMPAIGN (KENYA)
SERVICES ADVERTS (IRELAND)
LIFE SKILL SKITS (COLOMBIA)
HASHTAGS: #NOESTASSOLA (CHILE)



INNOVATIVE SUPPORT

FLAG INITIATIVE (GUATEMALA)
WHATSAPP REPORTING | HELP (ARGENTINA, COLOMBIA, URUGUAY)
MASK-19/CODE WORDS (SPAIN & FRANCE)



Several of these measures were adopted in Brazil, toward

- ❖ **STRENGTHENING RESPONSE & SUPPORT SYSTEMS**
- ❖ **ENSURING & PROVIDING FINANCIAL SUPPORT**
- ❖ **ADJUSTING SECURITY & JUSTICE SERVICES**
- ❖ **IMPROVING DATA & RAISING AWARENESS**

Following quarantine and social isolation measures implemented starting early February

SHORT TERM RELIEF MEASURES - SOME PRELIMINARY RECOMMENDATIONS



STRATEGIC AREAS

- VAW-RELATED FIRST-RESPONSE SYSTEMS
- RESOURCES AVAILABILITY
- TECHNOLOGY-BASED SOLUTIONS
- AWARENESS EFFORTS AND ACCESS TO INFORMATION
- VAW RESPONSE INTEGRATION, STRENGTHENING AND COORDINATION
- DATA COLLECTION AND AVAILABILITY

SHORT-TERM RELIEF

- VAW prevention & response services designated essential
- Expanding, strengthening and adjusting existing services
- Minimum human & financial resources for essential VAW services
- Technology-based solutions for access to information, service provision, & data collection
- Engaging & raising awareness for bystander reporting & community surveillance
- Resources & efforts for online & offline communication strategies
- Mainstreaming gender and VAW in socio-economic responses to COVID-19 and similar epidemics
- Active coordination between different stakeholders involved in pandemic response
- Data collection & sharing continues to guide VAW response



MEDIUM & LONG TERM RESPONSE & RESILIENCE - PRELIMINARY RECOMMENDATIONS

STRATEGIC AREAS

- VAW-RELATED FIRST-RESPONSE SYSTEMS
- RESOURCES AVAILABILITY
- TECHNOLOGY-BASED SOLUTIONS
- AWARENESS EFFORTS AND ACCESS TO INFORMATION
- VAW RESPONSE INTEGRATION, STRENGTHENING AND COORDINATION
- DATA COLLECTION AND AVAILABILITY

MEDIUM-TERM RESPONSE & LONG-TERM RESILIENCE

- Health systems & first responders equipped for pandemics
- VAW referral protocols & SOPs regularly assessed/updated
- Human & financial resources available for adequate VAW services
- Technology-based solutions to ensure access to information, service provision & data collection
- Continued VAW awareness efforts & communications campaigns
- VAW integrated into sectoral response & preparedness measures (e.g. health, education, security/justice, social protection).
- Social safety nets expended/strengthened w/ integrated VAW.
- Women's leadership & participation in decision-making for response in different sectors.
- Regular collection & systematization of VAW data & sex-disaggregated data on impact of epidemics.



WORLD BANK GROUP

Thank you!

Contacts:

ptavares@worldbank.org |

gbastos@worldbank.org | fcarbonari@worldbank.org