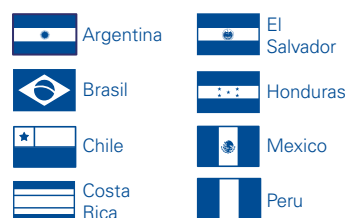


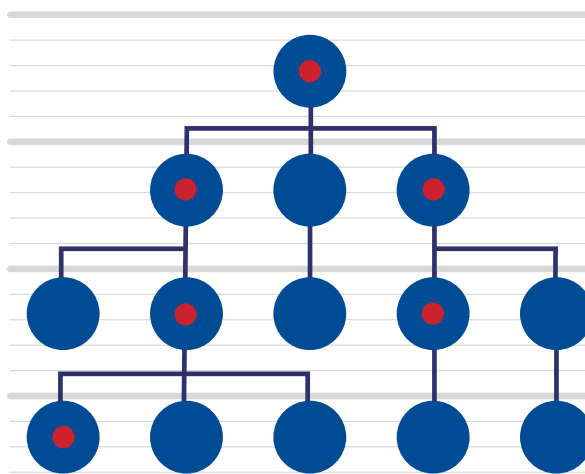
# INTERGENERATIONAL TRANSMISSION OF VIOLENCE

## Testimonials from Prison

### Countries surveyed



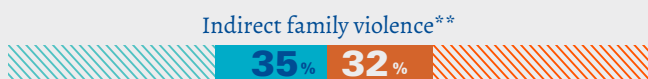
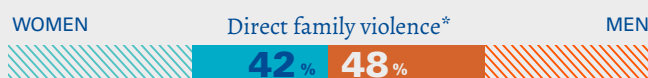
Data: Survey of convicted prisoners



### OVERALL OBJECTIVE

To understand the association between family violence during childhood and certain criminal conduct in adulthood.

## 1. FAMILY VIOLENCE



47%

HAVE BEEN VICTIMS OF DIRECT VIOLENCE

32%

HAVE BEEN VICTIMS OF INDIRECT VIOLENCE

\*Child abuse, where the child is the direct victim.

\*\*Violence between parents in the home; even though the minor may not directly witness the abuse, he or she is immersed in a violent family environment.

### RESEARCH QUESTIONS

#### General

To what extent does growing up as the victim of direct or indirect violence at home influence certain criminal patterns of men and women who are incarcerated in Latin America?

Are there gender differences in this influence? In other words, does childhood victimization have a more detrimental effect on the criminal behavior of women and/or men?

THIS STUDY FOCUSES SPECIFICALLY ON TWO TYPES OF CRIMINAL BEHAVIOR:



## 2. RECIDIVISM



**32%**

OF INCARCERATED PERSONS ARE RECIDIVISTS

### DIRECT VIOLENCE IN CHILDHOOD

↑ GREATER LIKELIHOOD OF RECIDIVISM  
MEN AND WOMEN ● ●

### INDIRECT VIOLENCE IN CHILDHOOD

↑ GREATER LIKELIHOOD OF RECIDIVISM  
MAINLY AMONG WOMEN ●

## 3. POSSESSION OF FIREARMS



**55%**

OF INCARCERATED PERSONS HAVE POSSESSED FIREARMS

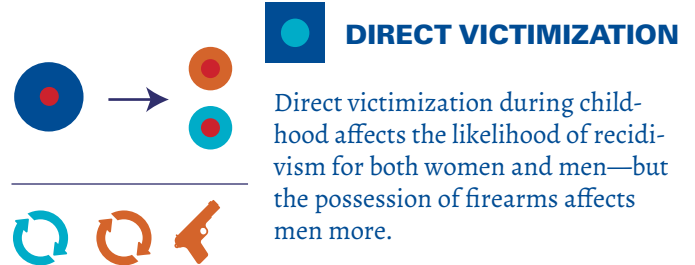
### DIRECT VIOLENCE IN CHILDHOOD

↑ GREATER LIKELIHOOD OF FIREARMS POSSESSION MAINLY AMONG MEN ●

### INDIRECT VIOLENCE IN CHILDHOOD

↑ GREATER LIKELIHOOD OF FIREARMS POSSESSION MAINLY AMONG WOMEN ●

## CONCLUSION



## AREAS OF INTERVENTION

### WOMEN

Women appear to be affected by both indirect and direct victimization. **Intervention strategies for women should, therefore, be broader and more encompassing to address both types of violence (direct and indirect).**

### MEN

Men are affected primarily by direct violence and are less affected by being immersed in a violent family environment. **Accordingly, interventions to prevent criminal conduct among men should focus on direct family violence.**

**To be more effective, interventions aimed at preventing criminal conduct should take into account gender differences.**